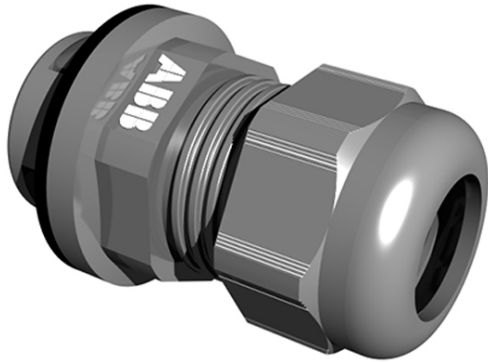


Login ▶



## New NPG series Quick-Connect™ nylon cable glands

Providing installations up to three times faster

Posted on January 14, 2018

The Quick-Connect design allows for fast and effective fitting of the cable gland **without access to the inside of an enclosure and without the need for a lock nut**. As a result, installation is up to three times faster. The tagline, “Push. Tighten. Done.,” conveys the simplicity of installation which enables the installer to move to the next task quickly, significantly boosting productivity.

Traditionally, two components (each with its own part number) and two sequential steps are required to install a cable gland into an enclosure. The NPG series Quick-Connect cable gland, however, is more efficient: it increases output by reducing installation to just one component and one easy step, while maintaining the highest level of performance.

Here are the highlights of the NPG series Quick-Connect cable gland:

- Gland connects electrical cord into a box or enclosure
- Suitable for general-purpose use
- Ideal for panel builders and volume installers
- “Push. Tighten. Done.” technology — perfect for high-volume installation

[Watch this video](#) to see how easy it is to use the NPG series Quick-Connect cable gland.

### Related Links and Resources:

[NPG Web Page](#)

[Technical Data Sheet](#)